



SERVICE CENTRE AND STEEL PROCESSING

M

PART OF
MANNI
GROUP



MANNI SIPRE
STEEL ENGINEERING



MANNI SIPRE
STEEL ENGINEERING

Manni Sipre is a market leader in the field of **pre-fabricated structural steel elements**. For over 50 years, it has been offering construction companies the benefits provided by the most advanced technologies available on the market, which are also used in its **Service Centres**, thus significantly increasing the competitiveness of steel solutions.

Manni Sipre intends to be a valuable partner for companies doing business in the steel building industry and in new and emerging sectors. To do this, it relies on the strong synergies it has created with the other companies in the Group. By constantly investing in resources and technology, Manni Sipre offers a range of products and services that meet the most diverse needs in fields such as mechanical engineering, heavy carpentry, earthmoving, oil & gas plants, shelving and automated warehouses, offshore, and light and heavy plant engineering.

270 mil

Euro turnover

7

Branches in Italy

400

Employees

100%

Recyclable products

300.000

Processed steel in tonnes/year



WHOLESALE - DELIVERY PROGRAMME

Most of our products are in stock and readily available - some are available on request

STEEL BARS (GRADE S235+355 / JR+J2):

Round steel, square section steel, flat steel, strip steel, angle steel, Bessemer steel, U-steel

SECTIONAL STEEL AND WIDE-FLANGED BEAM (S275-S355/JR-J0-J2-K2/W-WP):

UNP: h = 80÷400

IPE – IPEA: h = 80÷750 – 600 mm

HEA – HEAA – HEB – HEM: h = 100÷1000 mm

WELDING CARRIER:

Manufacturing for profiles with weight = kg/lfm ≥ 100 - max. Width 1, 2 m – max. Height 3.0 m

FLAT PRODUCTS (HEAVY PLATE):

Cold rolled sheets: t = 2÷10 mm (EN 10025-2 - grade S235÷355 / JR÷J2);

Hot-rolled wide strip – heavy plate: t = 6÷500 mm (EN 10025-2 - grade S235÷355 / JR÷J2,+AR,+N,W);

Wear-resistant steels: t = 4÷40 mm (HB400 – HB 450 – HB 500);

Fine-grained structural steels for pressure vessels:

t = 6÷120 mm (EN 10028-2/3 – grade P265GH – P275NH, NL2 – P355NH, NL2 – ADW1);
(ASME ASTM – grade A516 GR 415/60 – A516 GR 485/70);

High-strength fine-grained structural steels: t = 4÷100 mm (EN 10025-6 – S690 / QL)

High-strength cold forming steels: t = 4÷15 mm (EN 10149 – S700MC).

STEEL TUBES / STEEL HOLLOW SECTIONS

(GRADE S235JRH–S275JRH–S355J0H–S355J2H–S355J0HW):

With square / rectangular / round / cross-section;

Seamless steel tubes. Material produced according to **EN 10219** Part 1+2 and **EN 10210** Part 1+2

ALL PLANT CERTIFICATES ACCORDING TO EN 10204 - 2.2 - 3.1 / POSSIBLY 3.2 WITH THIRD-PARTY ACCEPTANCE ON REQUEST.

PREPROCESSING

In addition to unmachined products, we offer our customers a wide range of services:

Flame cutting:

oxy-fuel and plasma – via CAD systems

Cutting, splitting, shearing, stamping, drilling

cutting to length and sawing (mitre cuts)

Notching, reinforcing, head bolts, marking

other mechanical processing

LASER machining: management of tubes, beams, steel sheets, steel hollow sections 3D processing.

Preserving: blasting, priming,
zinc plating, colour coating

FINISHED STRUCTURAL ELEMENTS

Further processing up to the last production stage, a key advantage for our customers.

ESF and supplied welded together and tailor-made (= ready for assembly) steel construction and welded assemblies. These are produced according to the required quality and in accordance with your production and workshop plans.

We develop profitable outsourcing solutions for our customers, ranging from analysis and component production to warehouse and logistics optimisation.

HERE ARE A FEW EXAMPLES OF THE TANGIBLE BENEFITS FOR OUR CUSTOMERS:

- Competitiveness regardless of order or company size
- Flexibility and increase in production capacity
- Effective use and alignment of operational resources for the development of new markets and opportunities
- Simplified order processing
- Controlled fixed costs in production
- Reduction of in-house investments and the resulting fixed costs.
- Optimisation of logistics and stock-keeping
- Risk reduction in the event of fluctuations in raw material prices
- Optimisation of raw material stocks and semi-finished products

APPLICATION AREA:

- structural engineering, civil engineering and steel construction
- Machinery, plant and component construction
- Chemical industry
- Other

CERTIFICATIONS



UNI EN ISO 9001:2015
Cert No. 3185/4



EN ISO 14001:2015
Cert. No. 0442A/1



OHSAS 18001:2007
Cert No. 0079L/2

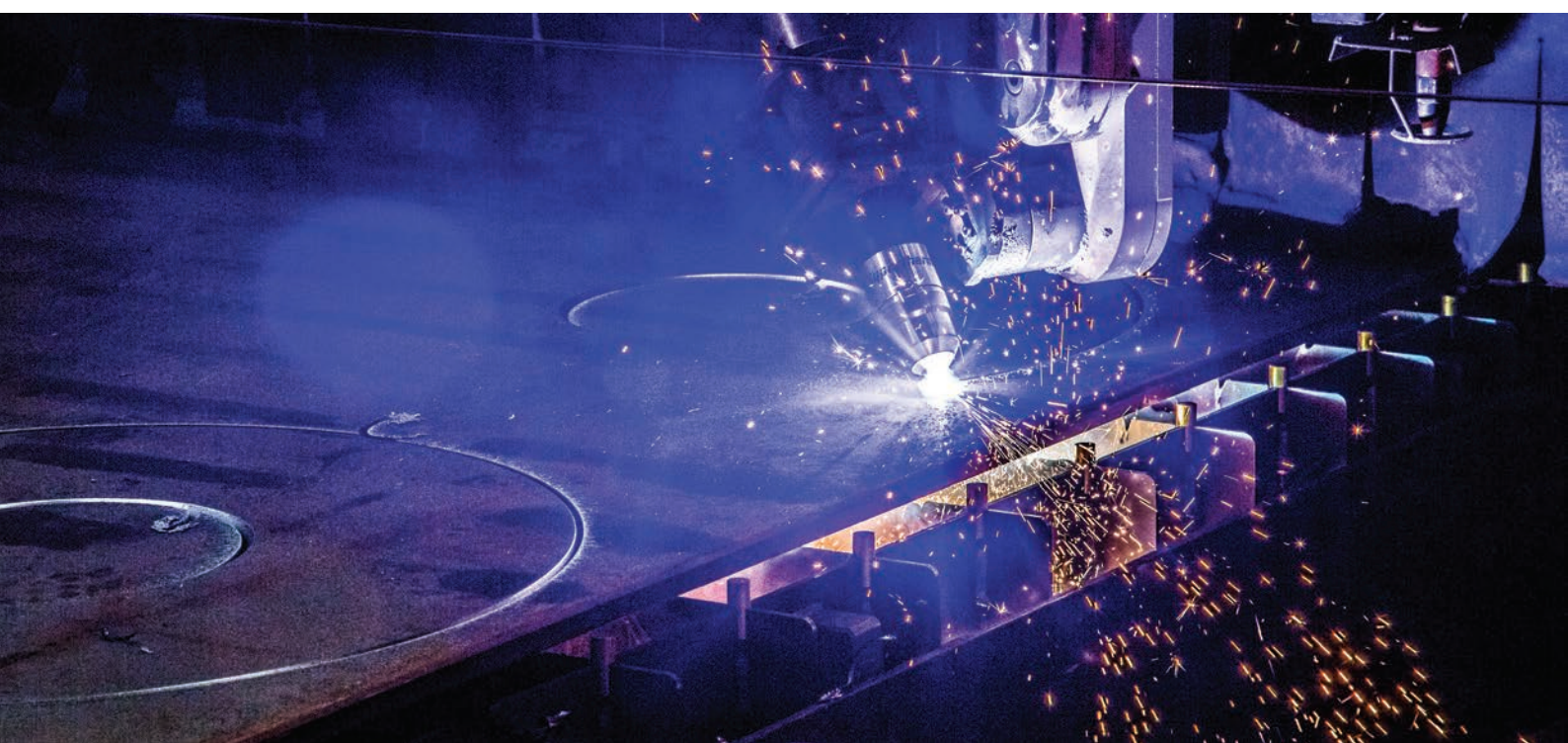


UNI EN ISO 3834-2
Cert No 6347/2



EN ISO 1090-1:2012
CE marking
Cert. No. 0425-CPR-2560 / **EXC4**





THE STRENGTH OF A GROUP

Durability and reliability, environmental friendliness and beauty. In one word: steel.

Manni Group, a well-established industrial player based in Verona, has been processing steel since 1945, offering an extensive range of steel products. Ongoing investment in research and development, a constant commitment to achieving the highest standards in terms of quality and service, and thorough attention paid to customer requirements make the Group's companies an ideal project partner:

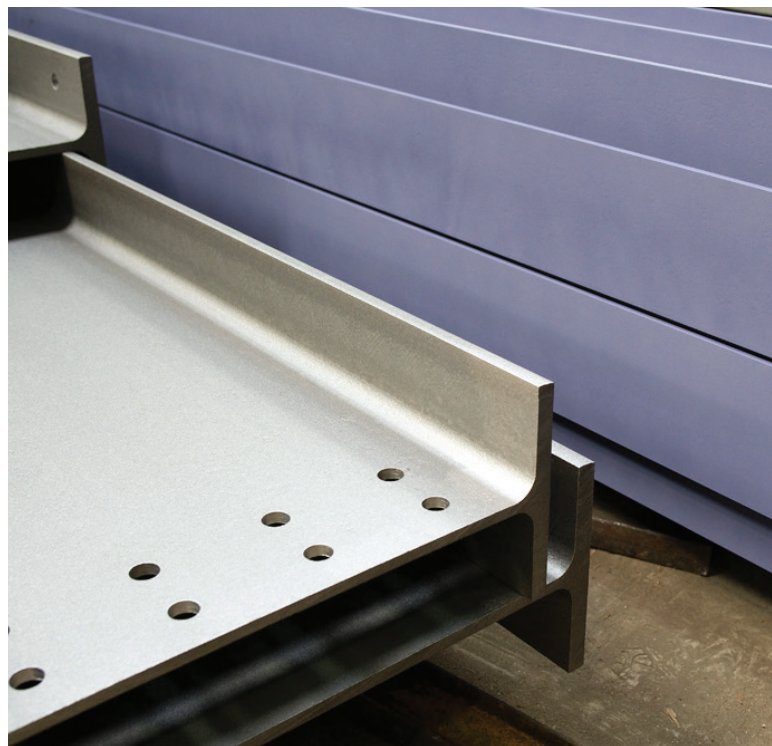
Manni Sipre, market leader in pre-fabricated steel structural elements;

Manni Inox, an advanced stainless steel service centre;

Isopan, international market leader in the production of insulating panels for buildings;

Manni Energy, for the design and manufacturing of renewable energy plants and energy efficiency solutions.

Thanks to the synergy with the companies that are part of Manni Group, we are able to offer our customers excellent construction solutions to expand or renovate buildings, with the advantage of consulting a single, trusted and reliable partner.



MANNI GROUP IN THE WORLD



MANNI SIPRE
STEEL ENGINEERING

www.mannisipre.com www.mannigroup.com

REGISTERED OFFICE

VIA A. RIGHI, 7 - 37135 VERONA (ITALY)
Tel. +39 045 8088911
Fax +39 045 581254

PLANTS

37060 MOZZECANE (Verona)
Tel. +39 0456339400

26013 CREMA (Cremona)
Tel. +39 0373890011

33030 CAMPOFORMIDO (Udine)
Tel. +39 0432653611

63076 MONTEPRANDONE (Ascoli Piceno)
Tel. +39 073571051